

IB World School
宮城県仙台二華高等学校

Sendai Nika's International Baccalaureate started in April 2021.

Sendai Nika was officially accepted as an IB world school by International Baccalaureate on September 1st, 2020.

*The IB building
(completed in December, 2021)*

From Nika to the world – Sky's the limit –

Sendai Nika's International Baccalaureate started in April 2021. Sendai Nika is the first public high school in the Tohoku area which offers this world-standard educational programme.

Sendai Nika's International Baccalaureate will realize your dreams if you are eager to work with people from different countries, support people in need, and contribute to world peace and/or do something to have people in the world understand Japan more deeply.

Learning in this programme may not be easy, however, IB students of the world are pursuing their learning goals with their eyes shining. Let's go to the world from Sendai Nika!

● What is International Baccalaureate (IB)

The objective of IB is summarized in the following ambitious IB Mission Statement:

The International Baccalaureate aims to develop inquiring, knowledgeable and caring young people who help to create a better and more peaceful world through intercultural understanding and respect.

To this end the organization works with schools, governments and international organizations to develop challenging programmes of international education and rigorous assessment.

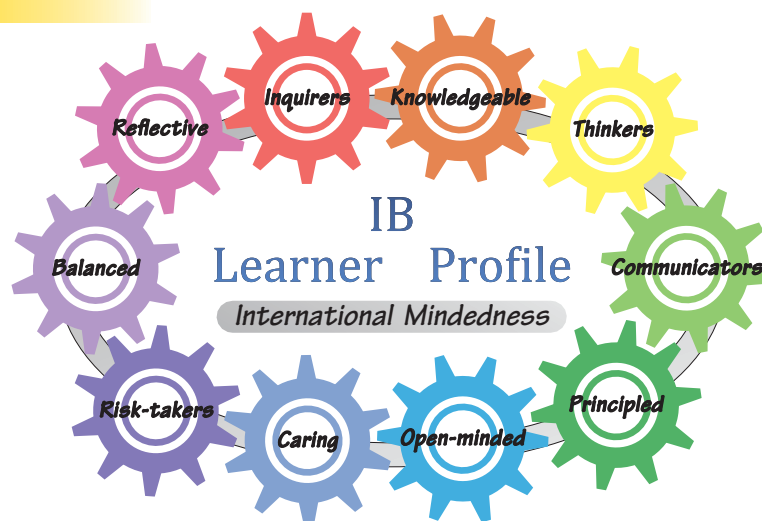
These programmes encourage students across the world to become active, compassionate and lifelong learners who understand that other people, with their differences, can also be right.

Quoted: International Baccalaureate Organization, "What is an IB Education?"

● IB Learner Profile

IB Learner Profile is the embodiment of the IB Mission Statement with 10 attributes.

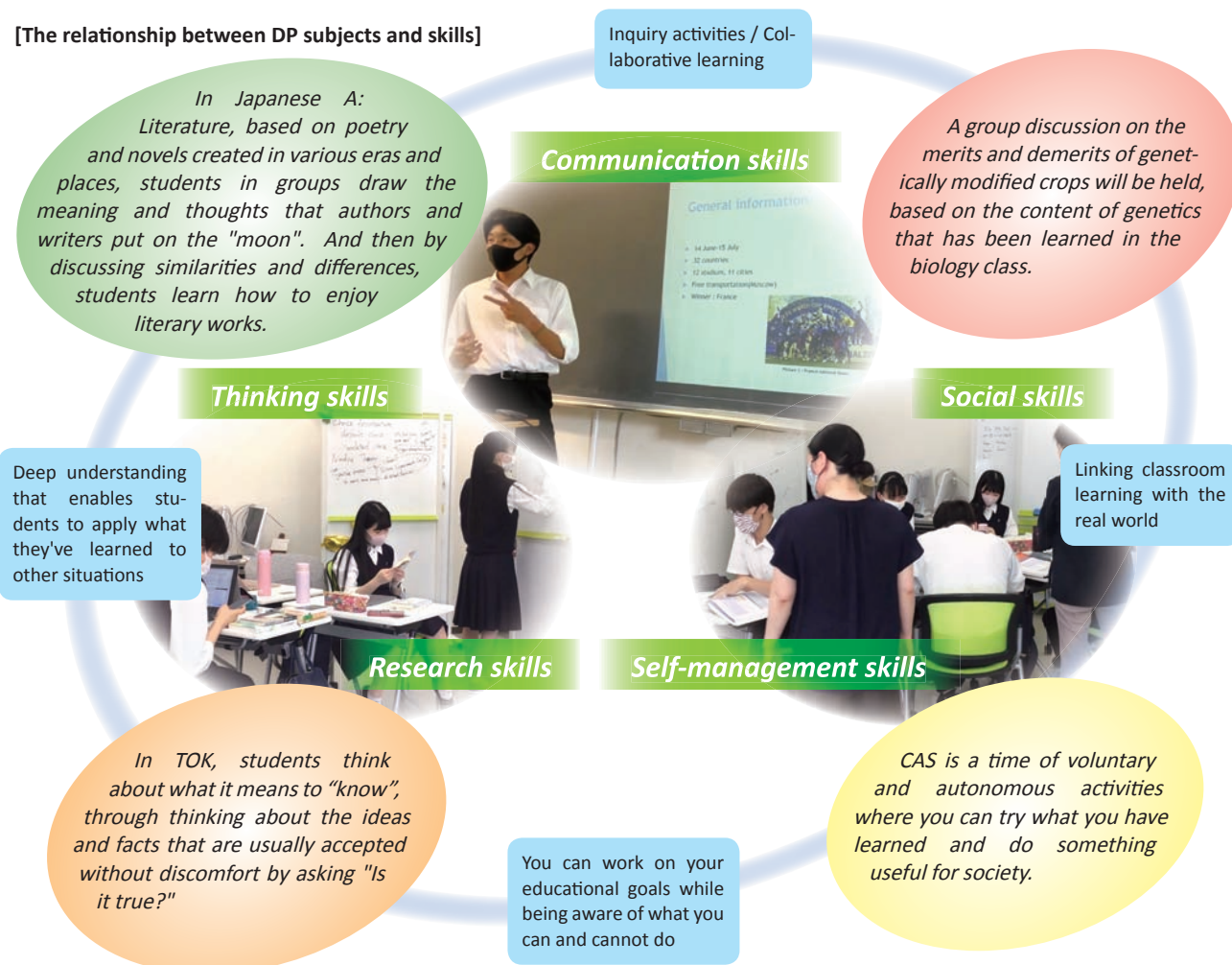
IB Learner Profile is intended to give an attention for reflection on what is the most important for IB students and the IB teachers, which is why it is located in the center of the programme.



● DP Classes in Sendai Nika

Of four IB programmes, Sendai Nika will provide the two-year Diploma Program (DP) to 2nd grade and 3rd grade high school students. In our DP classes, every unit is designed by considering the following points simultaneously; What students need to understand and what skills to be acquired; What kind of assessment proves that students have achieved or acquired it; What kind of educational tasks will be suitable. Students are respected for their diversity in how they learn, and assessments are carried out in various ways. In addition, assessments may be made to see whether the knowledge and skills learned can be used in the same situation as in the real world.

[The relationship between DP subjects and skills]



● Students suitable for Sendai Nika's IB

Study abroad

Students with high aspirations to go on to overseas universities and contribute to the world

Inquisitive Strength

Students who like to ponder what they have wondered in class

Collaborative learning

Students who are good at deepening their understanding by investigating on their own and discussing them with their fellows

Broad and deep interest

Students who are widely interested in society and nature and read a lot of newspapers and books



● DP courses offered in Sendai Nika

[Sample time table of 2nd year IB Science course student]

	Mon	Tue	Wed	Thu	Fri	Sat
1	Japanese Literature	Math	History	Physics	English	Physics
2						
3	Physics	Chemistry	English	Math	TOK	Math
4						
Lunch Break						
5	P.E.	Health			P.E.	
6	History	Japanese Literature	Chemistry	CAS	Chemistry	
7			LHR			

[Sample time table of 2nd year IB Humanity course student]

	Mon	Tue	Wed	Thu	Fri	Sat
1	Japanese Literature	Chemistry	History	Geography	English	Japanese Literature
2						
3	Chemistry	Geography	English	Math	TOK	English
4						
Lunch Break						
5	P.E.	Health			P.E.	
6	History	Japanese Literature	Math	CAS	Geography	
7			LHR			

stands for DP subjects.

Red letters indicate classes conducted in English.

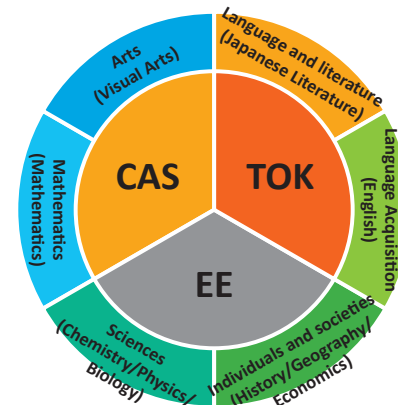
DP classes are mainly conducted for two consecutive periods.

2nd grade and 3rd grade high school IB course students will have morning classes every other Saturday.

“Course” represents a group of subjects created according to some purposes and career goals.

[DP Subjects]

6 subject groups (outer circle) and 3 core subjects (inner circle)



SL

(standard level)

150 hours in two years

HL

(higher level)

240 hours in two years

[Core Subjects]

TOK (Theory of Knowledge)

To gain new perspectives and thinking skills, students raise questions about knowledge, explore what the act of knowing is, and analyze real-world cases with critical thinking.

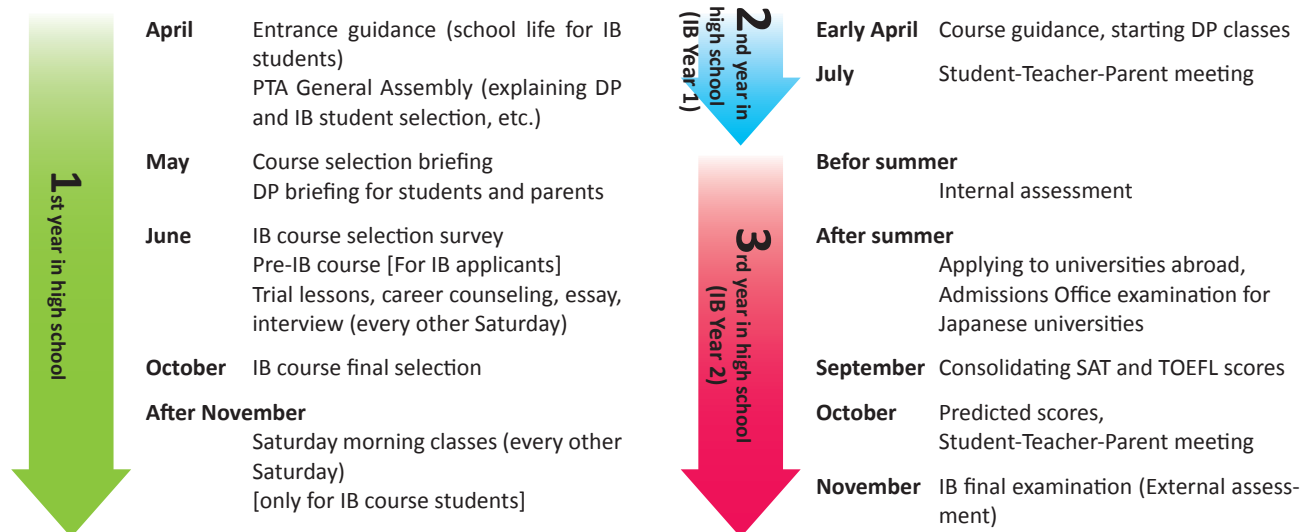
CAS (Creativity, Activity, Service)

Students perform three activities: artistic activities with creative thinking, physical activities towards healthy lifestyle, and unpaid service activities. All the activities must be planned by students on their own, and students should always be reflective.

EE (Extended Essay)

Students work on their research on one academic field out of 6 subject groups. The upper limit of the required essay is 4,000 words when you write on a subject in English or 8,000 letters on a subject in Japanese.

3 year schedule for IB course student



Q and A

Q1 Is it possible to get a Japanese high school diploma if I graduate as an IB student?

A1 Yes, by replacing DP subjects with official subjects listed in the Japanese Course of Study, you can, meet the requirements for graduation from Sendai Nika SHS, same as non-IB students.

Q2 Is there any special examination to be an IB student?

A2 No, there are no special examinations to be an IB student. After the entrance, there are half-year-long trial lessons and career counselings provided until October. The selection will take into account the wishes and suitability of the individual as well as the essay submitted and the result of the interview.

Q3 How much will it cost when becoming an IB student?

A3 There are no special tuition fees. However, it is estimated to cost 300 to 500 thousand yen for learning materials and the IB examination fee.

Q4 Can I still participate in club activities, school events, and student committees as an IB student?

A4 Yes, it is possible to participate in them. However, IB students may have more assignments or be busy on Saturday classes. You need to talk to your advisors.

Q5 It seems that some classes are conducted in English, but I am worried about my English abilities.

A5 Those classes are taught by a team of Japanese and foreign teachers. If you do not understand, you can ask questions in either language. However, as for the subjects in English, the exams are conducted in English, and most assignments and communications are also conducted in English. You need continuous efforts to improve your English.

Q6 Can IB students only take an overseas university?

A6 No, even in Japan, you can take the AO entrance examination, recommendation system, IB entrance examination, etc. However, comprehensive subject learning for university entrance exams is not conducted in the IB course.