

Sendai Nika's International Baccalaureate

started in April 2021.

Sendai Nika was officially accepted as an IB world school by International Baccalaureate on September 1st, 2020.

From Nika to the World –Your field is limitless –

The IB building
(completed in January, 2022)

In April 2021, the International Baccalaureate program started at Sendai Nika High School. It is the first time for a public high school in the Tohoku region to offer this course. We have prepared a dedicated building and a distinctive curriculum. We also invited many foreign teachers to provide "internationally standardized lessons."

If you want to work with people from around the world, if you wish to be a support to them, if you desire to contribute to world peace, if you aim to help people around the world understand Japan, for those of you dreaming of such a career or way of life, the Baccalaureate program at Sendai Nika will turn your dreams into reality.

Studying in the Baccalaureate program is by no means easy, but high school students studying the Baccalaureate worldwide share a sympathetic heart. They aim to shine and thrive on the world stage with bright eyes. Let's set our sights on the world from Sendai Nika.

● What is International Baccalaureate (IB)

The objective of IB is summarized in the following ambitious IB Mission Statement:

The International Baccalaureate aims to develop inquiring, knowledgeable and caring young people who help to create a better and more peaceful world through intercultural understanding and respect.

To this end the organization works with schools, governments and international organizations to develop challenging programmes of international education and rigorous assessment.

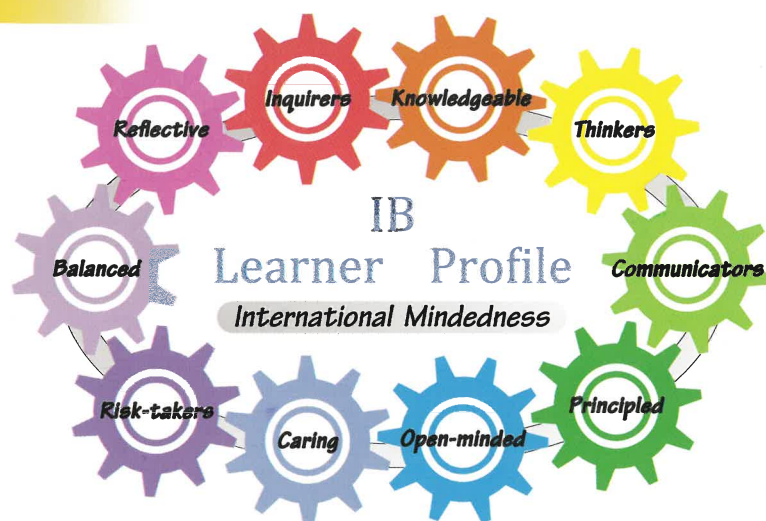
These programmes encourage students across the world to become active, compassionate and lifelong learners who understand that other people, with their differences, can also be right.

Quoted: International Baccalaureate Organization, "What is an IB Education?"

● IB Learner Profile

IB Learner Profile is the embodiment of the IB Mission Statement with 10 attributes.

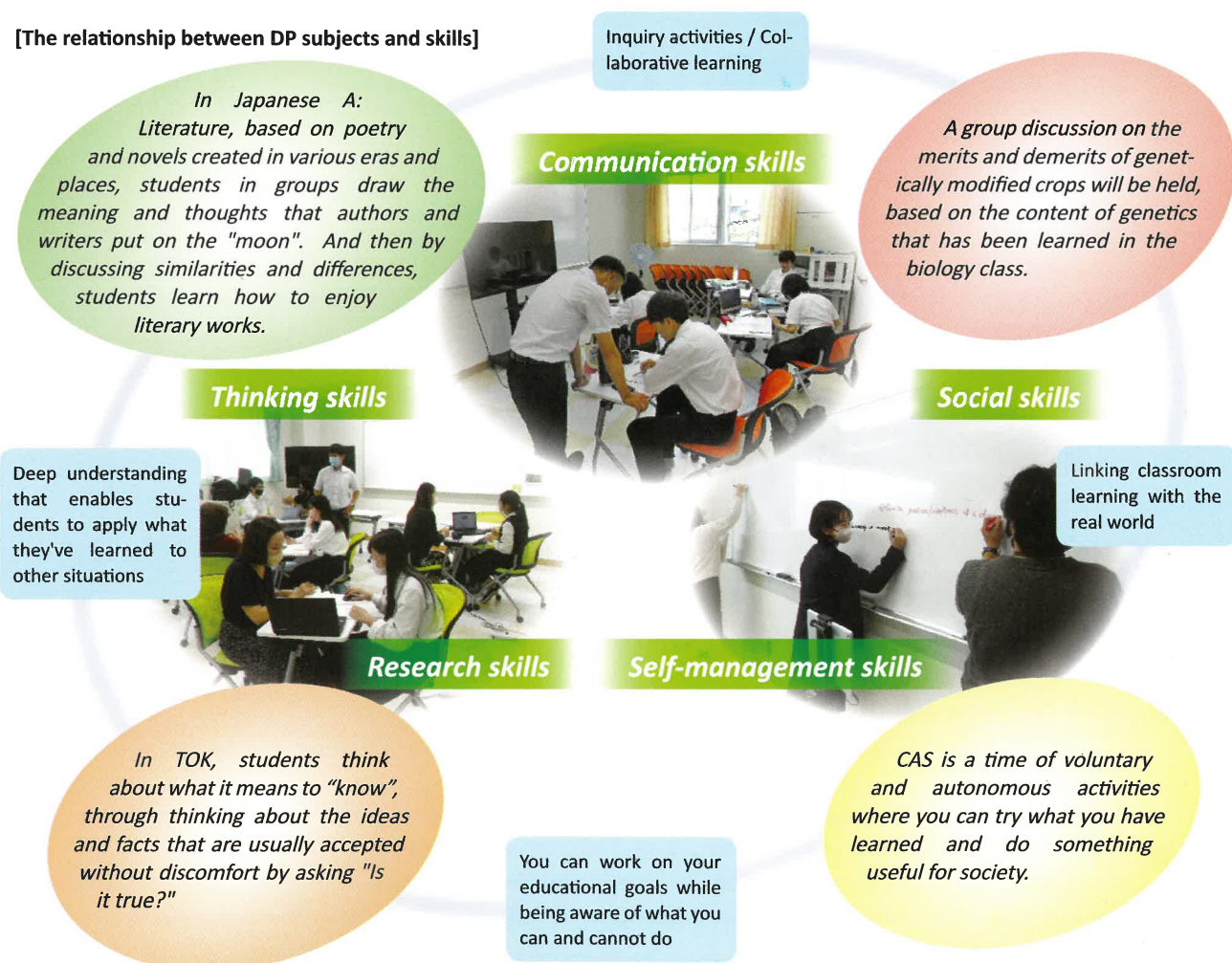
IB Learner Profile is intended to give an attention for reflection on what is the most important for IB students and the IB teachers, which is why it is located in the center of the programme.



● DP Classes in Sendai Nika

Of four IB programmes, Sendai Nika will provide the two-year Diploma Program (DP) to 2nd grade and 3rd grade high school students. In our DP classes, every unit is designed by considering the following points simultaneously; What students need to understand and what skills to be acquired; What kind of assessment proves that students have achieved or acquired it; What kind of educational tasks will be suitable. Students are respected for their diversity in how they learn, and assessments are carried out in various ways. In addition, assessments may be made to see whether the knowledge and skills learned can be used in the same situation as in the real world.

[The relationship between DP subjects and skills]



● Students suitable for Sendai Nika's IB

● Objectives of the IB Program at Sendai Nika

Desire to Study Abroad

We support students who have a strong aspiration to attend universities overseas and wish to contribute to the global community.

Choice in Learning Styles

In an interactive learning environment, we collaboratively create lessons that cater to each individual's learning style.



● Students Suitable for the IB Program at Sendai Nika

Collaborative Learning

Students who can work in small groups to complete a task or deepen their learning through various language activities.

Autonomous Learning

Students who can think about what needs to be done, plan on their own, and take action.

Curiosity

Students who can actively and curiously tackle open-ended questions.



● DP courses offered in Sendai Nika

[Sample time table of 3rd year IB students (2023)]

	Mon	Tue	Wed	Thu	Fri	Sat
1	Math	Chemistry	Physics Biology	Chemistry	Physics Biology	Japanese Literature
2						
3	Japanese Literature	English	CAS	Physics Biology	Math	English
4						
5	P.E.	History	TOK	History	Information Science	
6	Chemistry	Math				
7			HR	P.E.	P.E.	

[Sample time table of 2nd year IB students (2023)]

	Mon	Tue	Wed	Thu	Fri	Sat
1	Math	Economics Geography	Economics Geography	Math	History	Japanese Literature
2						
3	Economics Geography	Chemistry	Japanese Literature	TOK	Chemistry	English
4						
5	Health Education	P.E.	History	CAS	P.E.	
6	Japanese Literature	English			English	
7			HR			

stands for DP subjects.

Red letters indicate classes conducted in English.

DP classes are mainly conducted for two consecutive periods.

2nd grade and 3rd grade high school IB course students will have morning classes every other Saturday.

"Course" represents a group of subjects created according to some purposes and career goals.

[DP Subjects]

Group	Humanity	Science
1 Language and Literature	Japanese A Literature HL	Japanese A Literature SL
2 Language Acquisition	English B HL	English B SL
3 Individuals and Societies	History SL	
4 Experimental Sciences	Chemistry SL	Chemistry HL
5 Mathematics	Mathematics AA SL	Mathematics AA HL
6 Liberal Arts	Economics HL Geography HL	Visual Arts Physics HL Biology HL
Core	TOK (Theory of Knowledge)	
	CAS (Creativity, Activity, Service)	
	EE (Extended Essay)	

For Group 6 (Arts), you can choose two subjects from Individuals and Societies or Experimental Sciences.

[Core Subjects]

TOK (Theory of Knowledge)

To gain new perspectives and thinking skills, students raise questions about knowledge, explore what the act of knowing is, and analyze real-world cases with critical thinking.

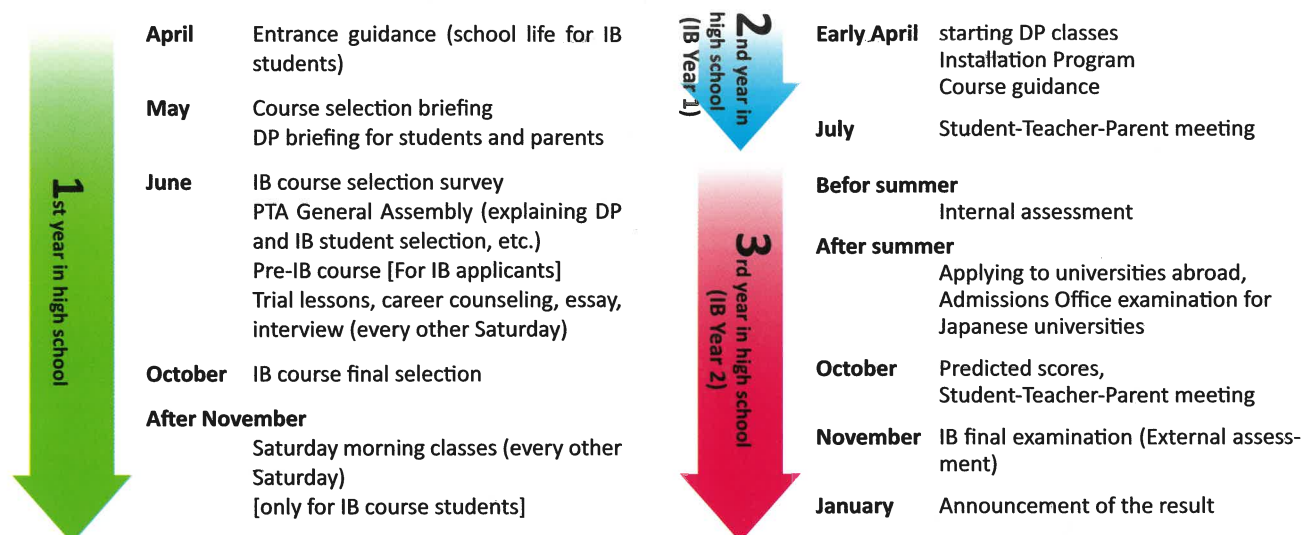
CAS (Creativity, Activity, Service)

Students perform three activities: artistic activities with creative thinking, physical activities towards healthy lifestyle, and unpaid service activities. All the activities must be planned by students on their own, and students should always be reflective.

EE (Extended Essay)

Students work on their research on one academic field out of 6 subject groups. The upper limit of the required essay is 4,000 words when you write on a subject in English or 8,000 letters on a subject in Japanese.

● 3 year schedule for IB course student



● Q and A

Q1 Is it possible to get a Japanese high school diploma if I graduate as an IB student?

A1 Yes, by replacing DP subjects with official subjects listed in the Japanese Course of Study, you can, meet the requirements for graduation from Sendai Nika SHS, same as non-IB students.

Q2 Is there any special examination to be an IB student?

A2 No, there are no special examinations to be an IB student. After the entrance, there are half-year-long trial lessons and career counselings provided until October. The selection will take into account the wishes and suitability of the individual as well as the essay submitted and the result of the interview.

Q3 How much will it cost when becoming an IB student?

A3 There are no special tuition fees. However, it is estimated to cost 300 to 500 thousand yen for learning materials and the IB examination fee.

Q4 Can I still participate in club activities, school events, and student committees as an IB student?

A4 Yes, it is possible to participate in them. However, IB students may have more assignments or be busy on Saturday classes. You need to talk to your advisors.

Q5 It seems that some classes are conducted in English, but I am worried about my English abilities.

A5 Those classes are taught by a team of Japanese and foreign teachers. If you do not understand, you can ask questions in either language. However, as for the subjects in English, the exams are conducted in English, and most assignments and communications are also conducted in English. You need continuous efforts to improve your English.

Q6 Can IB students only take an overseas university?

A6 No, even in Japan, you can take the AO entrance examination, recommendation system, IB entrance examination, etc. However, comprehensive subject learning for university entrance exams is not conducted in the IB course.